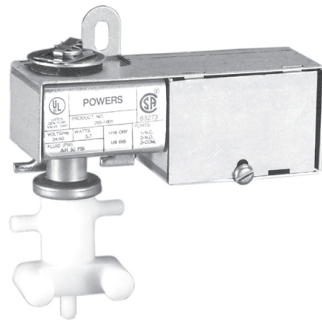


# Three-way EP Valves



265-1001 Three-way EP Valve-Junction Box Type.



265-1007 Three-way EP Valve-Open Frame Type.

## Description

A general purpose, electrically-operated, two-position three-way valve designed to control air flow, the 265 Three-Way Valve can be used for interlock between an electrical system and a pneumatic control system; available in open frame (yoke) and junction box (splice box) types.

## Features

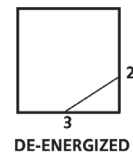
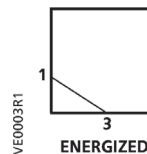
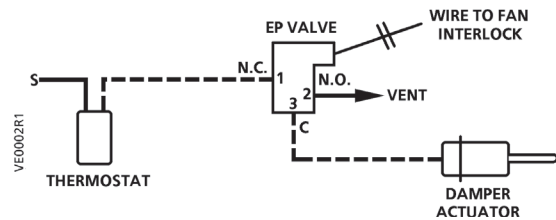
- UL and CSA approved for general purpose
- Valve may be mounted in any position
- Universal replacement for many competitive models
- Mounting holes provided in the yoke
- Wide selection of AC voltages

## Applications

The 265 EP Three-way Valves are commonly-used to alternately apply pressure to and exhaust pressure from pneumatically-controlled devices, such as valves and damper actuators, by an electrical input energizing or de-energizing the solenoid of the valve.

A standard method is shown in the Application Drawings below. The input air is connected to port 1 (normally closed) and the output is connected to port 3 (common). Thus when the solenoid is energized, port 1 connects to port 3 permitting the thermostat to control the damper actuator. When the solenoid is de-energized, port 2 (normally open) is connected to port 3, exhausting air from the actuator permitting it to return to its normal position.

### Application Drawings



# Specifications/Product Ordering

**Ambient Temperature**  
 Junction Box Type ..... 0 to 100°F (0 to 38°C)  
 Open Frame Type ..... 0 to 110°F (0 to 43°C)

**Controlled Medium** ..... Air only

**Maximum Air Pressure** ..... 30 psig (207 kPa)

**Air Flow Capacity**  
 Inlet Pressure ..... 20 psig (138 kPa)  
 Differential Pressure ..... 1 psi (7 kPa)  
 Air Flow ..... 600 scim (164 cm<sup>3</sup>/s)

**Cv Flow Factor** ..... 0.06

**Electrical Ratings**  
 Voltages ..... 24 to 480 Vac  
 Power Consumption ..... 5.7 Watts  
 Current Drain  
 Inrush ..... 17.3 VA  
 Holding ..... 9.2 VA

**Mounting Bracket** ..... 1 oval and open-ended hole; part of the yoke.

**Junction Box** ..... NEMA 1 Enclosure

**Air Connections** ..... Barbed fittings for 1/4" (6 mm) OD tubing

**Materials**  
 Body ..... Celcon Plastic  
 Internal ..... Buna N, Copper, Stainless Steel

**Shipping Weight**  
 Open Frame Type ..... 0.37 lb. (0.17 kg)  
 Junction Box Type ..... 0.54 lb. (0.24 kg)

265	AC Voltage		Part No.	Junction Box
	60 Hz	50 Hz		
	24	—	<b>265-1001</b>	
	120	110	<b>265-1002</b>	
	208	—	<b>265-1003</b>	
	240	220	<b>265-1004</b>	
	277	—	<b>265-1005</b>	
	480	440	<b>265-1006</b>	
	24	—	<b>265-1007</b>	Open Frame
	120	110	<b>265-1008</b>	



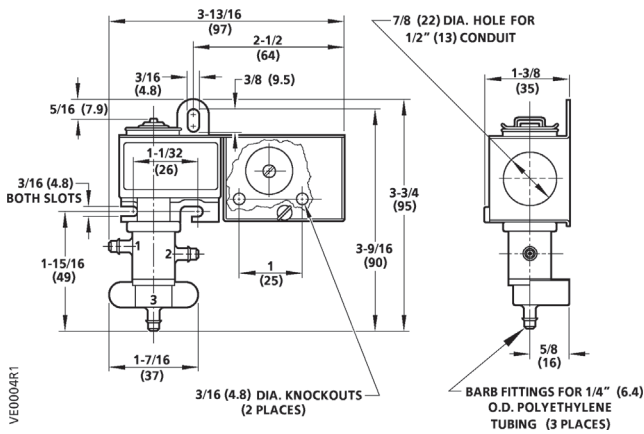
**Accessories & Service Kits** **G-39**

G-16

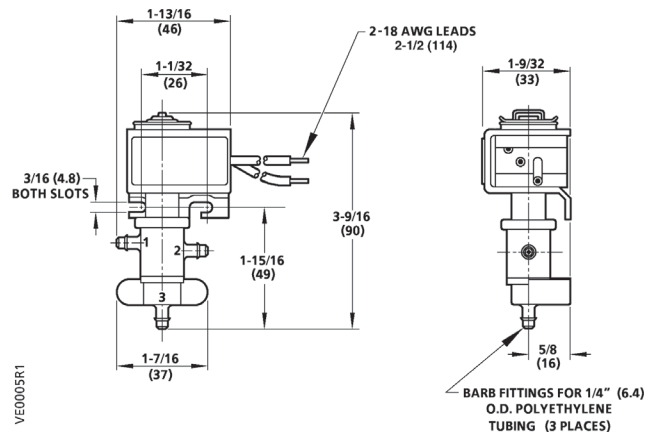
Switches & Relays

## Dimensions

265-1001 to 1006  
Junction Box Type



265-1007 to 1008  
Open Frame Type



Dimensions shown in inches (mm).



Part No. in black box Ships same day when requested through Rapid Response™ shipping. See page 1 for details.

**SIEMENS**